

Kliklok MEC Midrange Endload Cartoner.

FUTURE-PROOF SANITARY DESIGN.

The MEC features the Kliklok-patented rotary carton feeder and can package a wide variety of foods at speeds up to 170 cartons per minute.

The MEC was designed with first carton right capabilities for “set it and forget it” predictable and consistent performance. Product and equipment changeovers are faster than ever. Unplanned downtime and material waste are reduced.

DESIGNED FOR HIGHEST FOOD SAFETY STANDARDS

The open-channel stainless steel frame with angled surfaces provides no place for product or debris to accumulate and is IP65 washdown rated. Electrical cabinets are mounted overhead for safety and to provide unobstructed operator access to the machine interior.

KLIKLOK ROTARY CARTON FEEDER

The patented rotary carton feeder is the most positive in the industry. The straight-pick motion reduces wear on suction cups and short, rigid bars minimize deflection. The motion profile uniquely erects cartons in the direction of product flow with a 30% greater carton-open time.

EASY OPERATION WITH HMI 4.0 TOUCHSCREEN

The new HMI 4.0 color graphic touchscreen is intuitive and self-tutoring, and has full connectivity for data collection, sharing, and visualization.

DESIGNED FOR MAXIMUM PRODUCTION LEVELS

Changeovers on the MEC are tool-less, easily repeatable, and can be completed by one operator in 10–12 minutes. Cleaning and occasional maintenance are quick and easy.

BARREL CAM INSERTER WITH GENTLE INSERTION ANGLE

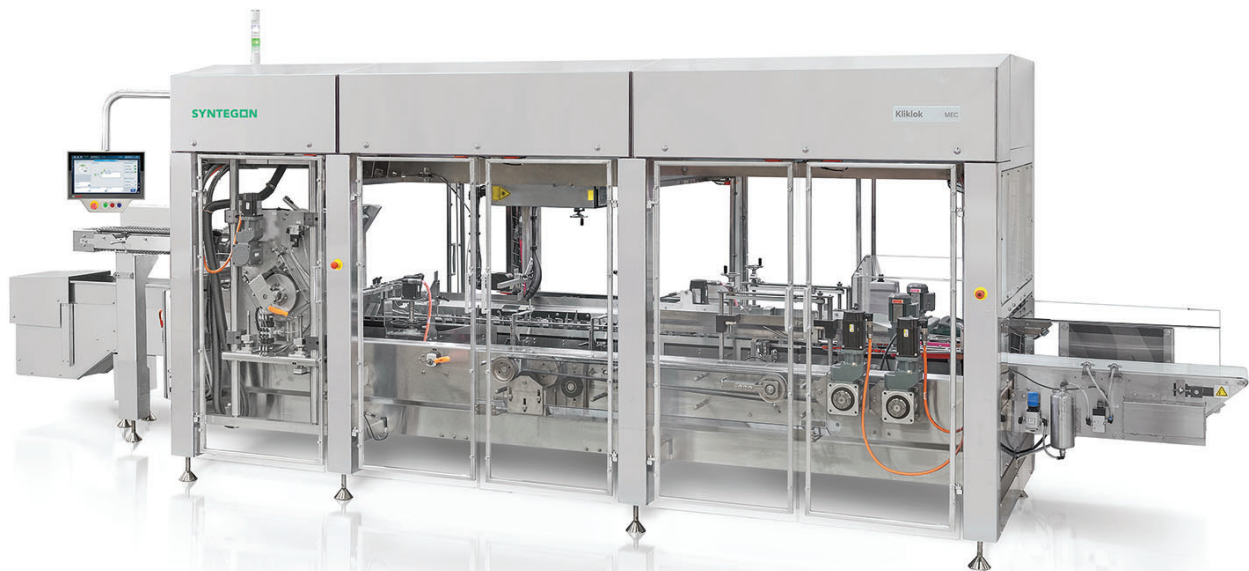
The all-new design features a gentle angle of insertion for better control of a variety of products at high speed. Dual jam protection protects the machine and provides easy clearing of the occasional jam.

IDEAL FOR BAG-IN-BOX PACKAGING LINES

The MEC can be fitted with an optional overhead confiner for snack, cereal, and other bag-in-box packaging applications. Also, ask us about Pocket Rededication.

Your benefits

- ▣ Speeds up to 170 cartons/min
- ▣ Patented rotary carton feeder
- ▣ Future-proof sanitary design
- ▣ Connected HMI 4.0 touchscreen
- ▣ Fast and repeatable changeovers
- ▣ Optional integrated open flap detect + reject



Packaging Line Structure.

Primary Packaging

Vertical Bagmaker

Horizontal Wrapper

Cup Filler

Product Handling

Pick and Place Robotics

Product Timing / Loading

Secondary Packaging

Topload

Endload

Wraparound

Case Packers

Kliklok MEC Midrange Endload Cartoner

Standard Features

- Hygienic stainless steel, open-channel washdown systems (IP65)
- Ergonomic design for outstanding operator access
- Powered 1.18 m carton hopper
- Patented servo-driven rotary carton feeder
- Vacuum generated directly at cups
- Automatically-adjustable product infeed conveyor
- Two-chain stainless steel transfer with quick-change lugs
- Unique "stacked chain" carton carrying chains
- Multi-axis servo design
- Barrel-cam product inserter with dual jam protection
- HMI 4.0 color touchscreen interface
- Allen-Bradley control motors and drives
- Network connectivity and data acquisition
- Light stack machine status indicator
- CE compliant

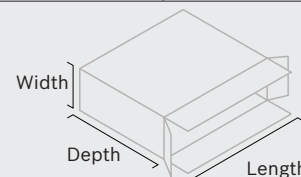
Optional Features

- Integrated open flap detect and reject system
- Trailing minor flap kicker
- Overhead confiner
- Integrated product timing module
- Integrated glue filling system
- PIC extensions
- Date coding
- Stainless steel laser-cut "mesh" guarding
- Product reclaim conveyor

Technical Specifications

Performance	min.	max.
Speed (cartons per minute)	25	170 *
* With 9" pitch; 150 cpm with 12" pitch. Actual speed depends upon machine configuration and carton size and style.		
Carton Size Range	min.	max.
Length (9" pitch)	51 mm (2.00")	190 mm (7.50")
Length (12" pitch)	51 mm (2.00")	267 mm (10.50")
Width	19 mm (0.75")	101 mm (4.00")
Depth	89 mm (3.50")	343 mm (13.50")

An individual carton combining multiple minimum or maximum dimensions may not be compatible with the standard system.



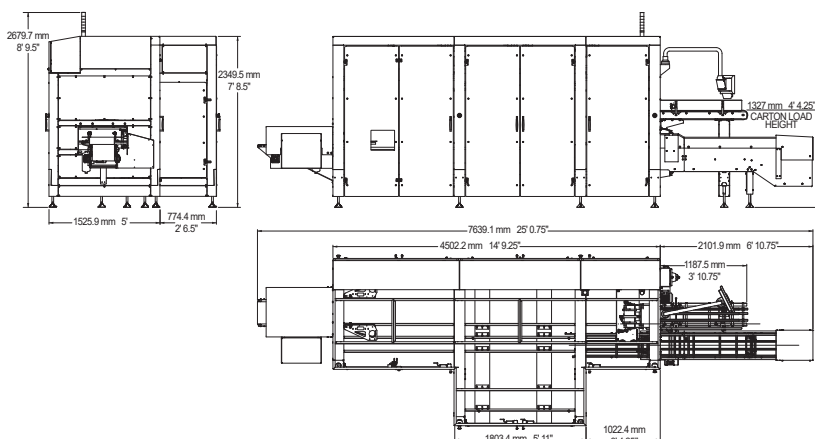
Operating Requirements

Power Supply	400 VAC / 480 VAC, 50/60 Hz
Air	588 L/min (21 cfm) 5.5 bar (80 psi)

Construction

Fully-welded stainless steel frame. Stainless steel shafts. Nickel-plated chains, pulleys and sprockets. Clear polycarbonate guards. Minimal anodized aluminum parts.

Shipping Weight, Estimated	3600 kg (8000 lb)
----------------------------	-------------------



Kliklok LLC, A Syntegon Technology Company
5224 Snapfinger Woods Drive
Decatur, GA 30035 USA

Phone +1 770 981-5200
Fax +1 770 987-7160
Mail 2p.3p@syntegon.com
Web www.syntegon.com/2p

Document PAUS-MKT-00110 Rev 6
Date 06.08.2020